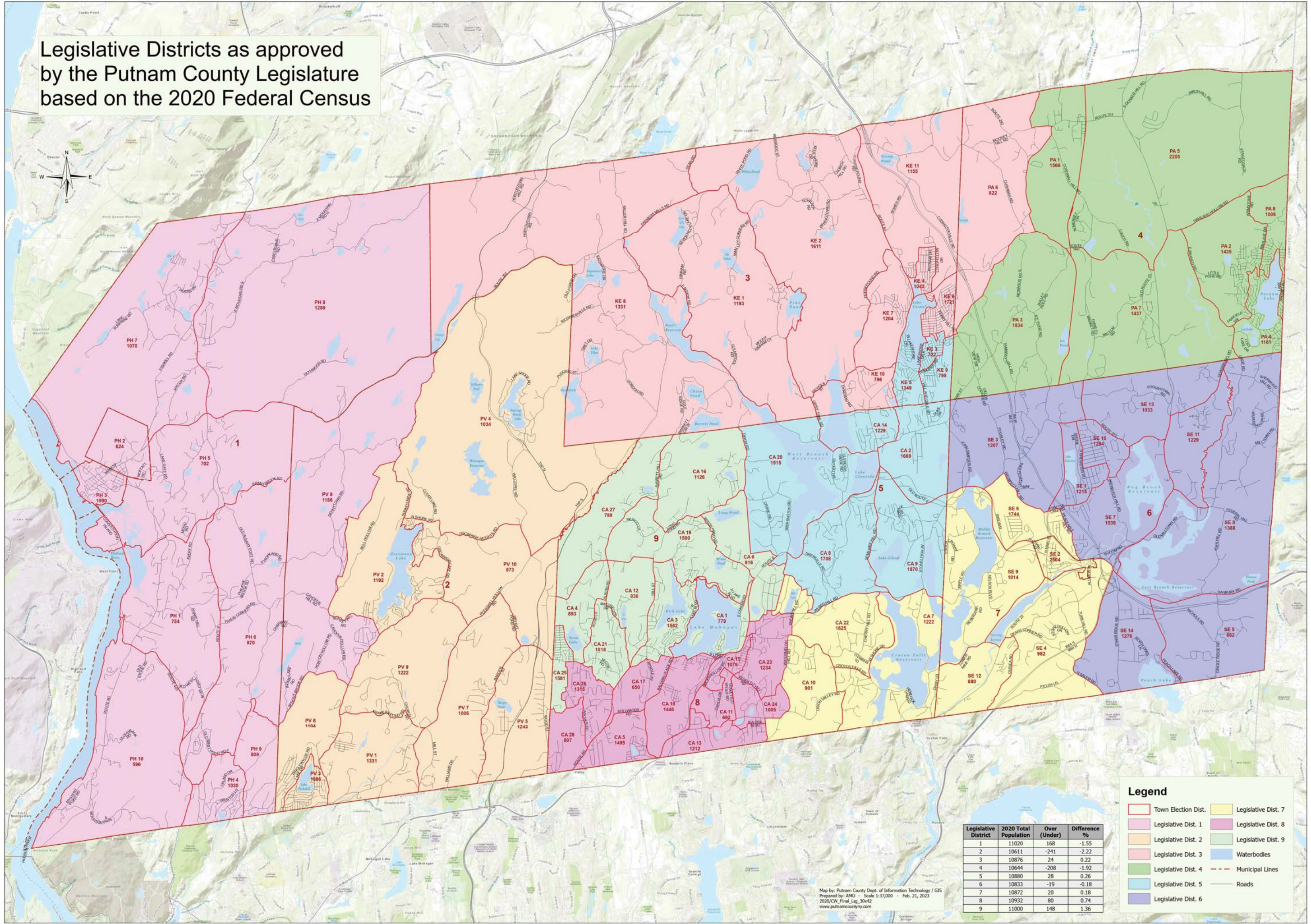


Legislative Districts as approved by the Putnam County Legislature based on the 2020 Federal Census



Legislative District	2020 Total Population	Over (Under)	Difference %
1	11020	168	-1.55
2	10611	-241	-2.22
3	10876	24	0.22
4	10644	-208	-1.92
5	10880	28	0.26
6	10833	-19	-0.18
7	10872	20	0.18
8	10932	80	0.74
9	11000	148	1.36

**Legend**

- Town Election Dist.
- Legislative Dist. 1
- Legislative Dist. 2
- Legislative Dist. 3
- Legislative Dist. 4
- Legislative Dist. 5
- Legislative Dist. 6
- Legislative Dist. 7
- Legislative Dist. 8
- Legislative Dist. 9
- Waterbodies
- Municipal Lines
- Roads

Map by: Putnam County Dept. of Information Technology / GIS  
 Prepared by: AMO - Scale 1:37,000 - Feb. 21, 2023  
 2020/CW Final Log 30x42  
[www.putnamcountyga.com](http://www.putnamcountyga.com)